

Disability Sports Learning Community (DSLCL) 2.0 (2025 to 2029) Handbook for Members

(As of Feb 2025)



Content

Reference and Introduction

Vision and Mission

Community Structure

Platform of Communication and Resources

Handbook Jointly Prepared By: SSI/NYSI, CoachSG, SDSC, ActiveSG PSA, SportCares

Reference

Disability Sports Master Plan 2024 –Ten Strategic Moves Announced to Build a More Inclusive and Sustainable Sporting Ecosystem for Persons of All Abilities

“To grow coaching capabilities, competencies of coaches in disability sports and support personnel’s expertise in high performance disability sports will be enhanced. The number of registered coaches under the National Registry of Coaches who can coach persons with disabilities will more than double from about 120 today to 300 by 2030 across the participation, pathway, and performance levels. “

<https://www.mccy.gov.sg/about-us/news-and-resources/press-statements/2024/Nov/Disability-sports-master-plan-2024>

The Singapore Athlete Development Playbook
Anchors of the Athlete Development Pathway

The Foundation, Development, Excellence and Sustainability (FDES) Framework
Holistic Ecological Approach (HEA) to talent development
Athletic Talent Development Environment (ATDE) and Environment Success Factors (ESF)
Youth Coaching Concepts

<https://www.nysi.org.sg/talent-id/the-singapore-athlete-development-playbook>

<https://indd.adobe.com/view/7bd648fb-3865-47f8-a753-116c3eadb6cc>

Website

SSI/NYSI –

<https://www.sportsingapore.gov.sg/our-work/singapore-sport-institute/introduction/>

<https://www.nysi.org.sg/>

SDSC – <https://sdsc.org.sg/>

CoachSG – <https://coachsg.sportsingapore.gov.sg/coachsg>

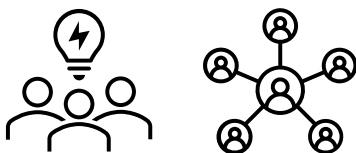
ActiveSG PSA - <https://www.activesgcircle.gov.sg/academies-clubs/parasportacademy>

SportCares - <https://sportcares.sportsingapore.gov.sg/>

Introduction

A Community of Practice (CoP) / Learning Community concept where members gather, learn, and contribute back to Disability Sports Coaching.

Members are encouraged to share best coaching practices, discuss coaching challenges that they might face and utilize the expertise within the community to help tackle the challenges.



Vision and Mission

Vision: Empowering disability sports coaches in Singapore through knowledge sharing, collaborative learning, and professional development, fostering a vibrant and caring disability sports ecosystem.

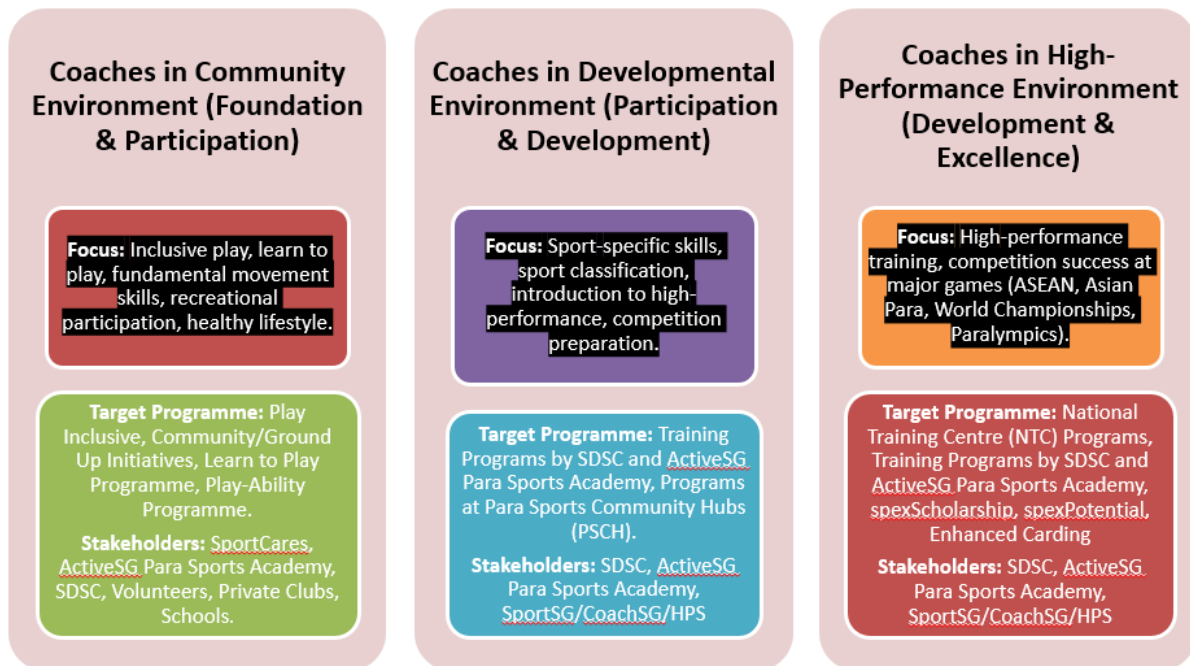
Mission: Creating a supportive and inclusive platform where disability sports coaches:

- **Connect and Collaborate:** Network with peers, share experiences, and build professional relationships.
- **Develop Expertise:** Access resources, attend workshops, and participate in coaching education programme.
- **Enhance Coaching Practice:** Learn and implement best practices, improve coaching methodologies, and address coaching challenges.
- **Contribute to the Field:** Share knowledge and expertise, mentor aspiring coaches, and advocate for the growth of disability sports. Coaches within the community are valuable sources of expertise.

Community Structure

Focus on the Environment

We can curate content and learning that best fits the environment by concentrating on its specific needs.



Platform of Communication and Resources



Disability Sports Learning Community -

<https://chat.whatsapp.com/Fkd4uNH9CcYFG5fGdxRxnR>

Coaches in Community Environment (Foundation & Participation)

<https://chat.whatsapp.com/CWBELcXb7gD8MlnMHNtHpm>

Coaches in Developmental Environment (Participation & Development)

<https://chat.whatsapp.com/HV5VcIYwM77Fb2xuJz7fnp>

Coaches in High-Performance Environment (Development & Excellence)

<https://chat.whatsapp.com/Kpg1CZ0KyZiGau20dAGvUi>



Resources & Courses:

DSLC Content

https://drive.google.com/drive/folders/1UedwWRHd0CqmRjXYzMHtk7zXsqXJ_J0z?usp=drive_link

Courses (with certification)

<https://www.rp.edu.sg/ace/short-course/Detail/introduction-to-disability-sports>

<https://www.rp.edu.sg/ace/short-course/Detail/strength-training-for-inclusive-fitness-using-hur-activ8>

<https://www.ssi.gov.sg/training/disability/>

https://sdsc.org.sg/sdsc_wellness/ipc-online-academy/



Continuing Coach Education (CCE)

<https://www.nysi.org.sg/youth-coaching/youth-coaching-online>

<https://sdsc.org.sg/coaching-resources/>

<https://sdsc.org.sg/communities-resources/>

https://sdsc.org.sg/sdsc_wellness/lets-play-together/

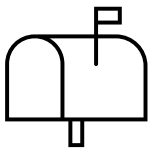
<https://sportcares.sportsingapore.gov.sg/programmes/adaptive-sports-toolkit/>

<https://resources.specialolympics.org/>

<https://www.paralympic.org/classification>

<https://www.paralympic.org/news/book-training-and-coaching-paralympic-athlete-now-available>

<https://www.inclusivesport.gov.sg/>



Question/Suggestion box: <https://forms.gle/J3YoMkdumEZNrie38>

